

Visit [CNPS.org/gardening](https://www.cnps.org/gardening) to learn more!

Give your new CA native landscape a healthy start by following our online planting and watering guides.

Planting and Watering

Hardscape – Use permeable surfaces wherever possible to allow water to soak in to the soil below.

- Stepping stones
- Permeable paving (at least 1/4" between pavers)
- Gravel
- Decomposed granite (DG)

Mulch – Retain moisture, feed your soils, and insulate your plants from heat and cold.

- Use organic, weed free, well-composted mulch with a fine to medium texture.
- Apply after planting, and in late spring and early fall.
- AVOID wood chips, large pieces of bark mulch, and synthetic materials. They deprive your soil and plants of nutrients.
- AVOID weed cloths, plastic, and other weed barriers. They prevent the natural cycle of nutrients through the soils, can kill the living biology in your soil, and are often ineffective at preventing weeds.

Soil Amendment – Many native plants thrive in what we consider poor soil conditions!

- Add organic compost or worm castings to promote healthy soil.
- AVOID chemical fertilizers and other amendments.

Grass Removal – Still need to get rid of your lawn? Try sheet mulching!

- Layers of cardboard and mulch deprive grass of light.
- Layers decompose into nutrients for your new plants.
- Visit [CNPS.org/gardening](https://www.cnps.org/gardening) for more information!

Living Soil

Water Feature – Pollinators, birds, and wildlife need water too!

- Add a bird bath, fountain or other water feature.

Create a Habitat

Bare Soil for Bees – Our ground dwelling, native bees need habitat! These bees are not aggressive, and will help keep your landscape flowering!

- Leave a few sunny areas of your landscape mulch free.

Garden Décor – Most importantly, have fun with your garden!

- Add a personal touch with your favorite décor.
- Boulders
- Rain Chain
- Bird Feeders
- Bench
- Decorative Pots
- Patio Table

The California Native Plant Society is a statewide non-profit organization with 35 local chapters dedicated to the conservation and enjoyment of California's native plants and places.



BRING YOUR DESIGN TO LIFE



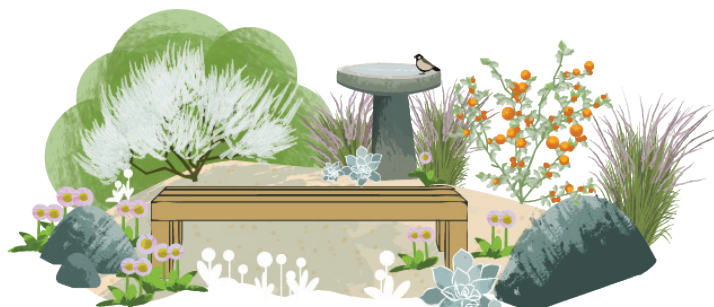
CALIFORNIA
NATIVE PLANT SOCIETY
Bristlecone Chapter
Inyo, Mono, and Northeastern
Kern Counties

Native Landscape Planting Guide

Starting a native plant garden doesn't have to be complicated. This easy guide takes the guesswork out of which plants to use where. Simply choose one of the garden vignettes below and select from recommended native plants listed on the inside of your guide.

✓ Low Water Use ✓ Pollinator Friendly ✓ Locally Native

Five Easy Project Ideas for your Garden



Homey Habitat

Featuring a bench and bird bath, you can take a seat in this habitat and enjoy all of the bustling activity in your yard!
Features: bench, bird bath, boulders.



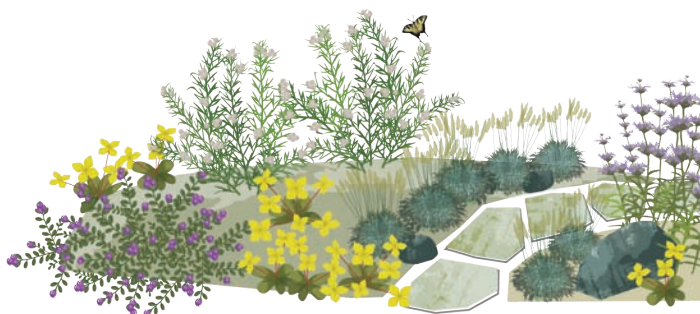
Colorful Entry

Make a statement in your entryway! Be sure to choose plants with a variety of colors.
Features: large pot, decorative round stones.



Wildlife Walkway

Take a stroll through your landscape. Use permeable materials for your pathway, such as stepping stones or decomposed granite.
Features: permeable walkway, large boulders.



Pollinator Park

Add excitement to the parkway strip along your driveway by adding plants that butterflies and other pollinators love.
Features: stepping stones and contrasting colors.



Living Wall

Designing your space vertically can add life to your yard. Use bold colors, and interesting shapes to make a flat area stand out.
Features: rain chain, swale, trellis.

Garden plans and watercolor courtesy of Kathleen Catton, Feochadan Land Design.
Graphic illustrations by Randi Gunder, Goldenscape Designs.

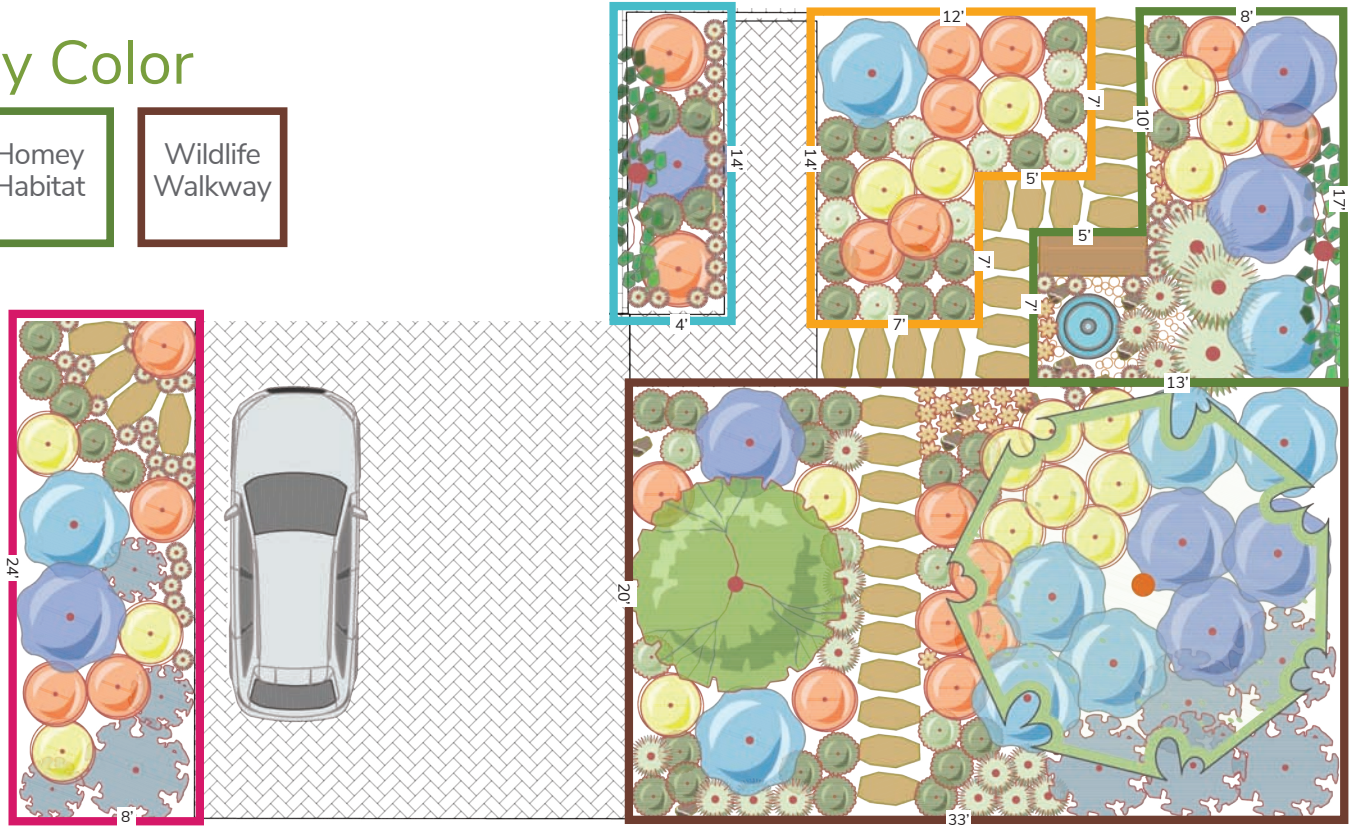


▶ CHOOSE YOUR PLANTS

Vignettes Outlined By Color



1. Choose the design vignette that best fits the shape and size of your site.
2. Match the symbols with those in the plant list.
3. Select plants based on your site's sun exposure.
4. Bonus points for choosing locally native plants!



California Native Plant List

Bristlecone Chapter
Inyo, Mono, and Northeastern Kern Counties

SYMBOL	PLANT SPECIES	LOCAL	SUN	WATER	H/W	COLOR	WILDLIFE
TREES							
	Aspen / <i>Populus tremuloides</i>	Y	☀	💧💧	20' 10'	●●	🐝🦋
	Desert Willow / <i>Chilopsis linearis</i>	Y	☀	💧💧	23' 20'	●●	🐝🦋
LARGE SHRUBS							
	Mountain Mahogany / <i>Cercocarpus ledifolius</i>	Y	☀☀	💧	20' 10'	●	🦋
	Fernbush / <i>Chamaebatiaria millefolium</i>	Y	☀☀	💧	7'	●	
	Desert Olive / <i>Forestiera pubescens</i>	Y	☀☀	💧	8' 8'	●	🐝🦋
	Coffeeberry / <i>Frangula californica</i>	Y	☀☀	💧	6' 15'	●●	🐝🦋
MEDIUM SHRUBS							
	Evergreen Winterfat / <i>Krascheninnikovia lanata</i>	Y	☀	💧	3' 3'	●	
	Bitterbrush / <i>Purshia tridentata</i>	Y	☀	💧	3' 3'	●●	🐝
	Deciduous Nuttall's Sunflower / <i>Helianthus nuttallii</i>	Y	☀	💧/💧	6' 1'	●	🐝🦋
	Desert Peach / <i>Prunus andersonii</i>	Y	☀☀	💧	4' 7'	●	🐝🦋
SMALL SHRUBS							
	Evergreen Bush Sunflower / <i>Encelia actoni</i>	Y	☀	💧	2' 2'	●	🐝🦋
	Purple Sage / <i>Salvia dorrii</i>	Y	☀	💧	2' 2'	●	🐝🦋
	Inyo Bush Lupine / <i>Lupinus excubitus</i>	Y	☀☀	💧	4' 3'	●	🐝🦋
	Deciduous Utan Service Berry / <i>Amelanchier utahensis</i>	Y	☀☀	💧	4' 4'	●	🐝🦋
	Tall Evening Primrose / <i>Oenothera elata</i>	Y	☀☀	💧	5' 3'	●	🐝🦋
	Apricot Mallow / <i>Sphaeralcea ambigua</i>	Y	☀	💧	3' 2'	●	🐝🦋
	Prince's Plume / <i>Stanleya pinnata</i>	Y	☀	💧	4' 4'	●	🐝🦋
LOW SHRUBS							
	Evergreen California Buckwheat / <i>Eriogonum fasciculatum</i>	Y	☀	💧	3' 2'	●	🐝🦋
	Sulphur Buckwheat / <i>Eriogonum umbellatum</i>	Y	☀	💧	3' 2'	●	🐝🦋
	Firecracker Penstemon / <i>Penstemon eatonii</i>	Y	☀	💧	2' 1'	●	🐝🦋
	Rose Penstemon / <i>Penstemon floridus</i>	Y	☀☀	💧	3' 1'	●	🐝🦋
	Mojave Penstemon / <i>Penstemon incertus</i>	Y	☀	💧	2' 1'	●	🐝🦋
	Palmer's Penstemon / <i>Penstemon palmeri</i>	Y	☀	💧	3' 2'	●	🐝🦋
	Desert Penstemon / <i>Penstemon pseudospectabilis</i>	Y	☀	💧	3' 3'	●	🐝🦋
	Scarlet Penstemon / <i>Penstemon rostriflorus</i>	Y	☀	💧	2' 1'	●	🐝🦋
	Showy Penstemon / <i>Penstemon speciosus</i>	Y	☀	💧	1' 1'	●	🐝🦋
	Deciduous Red Columbine / <i>Aquilegia formosa</i>	Y	☀☀	💧/💧	1' 1'	●●	🐝🦋
	Broad Leaf Milkweed / <i>Asclepias speciosa</i>	Y	☀☀	💧/💧	3' 2'	●●	🐝🦋
	Golden Forget-Me-Not / <i>Cryptantha confertiflora</i>	Y	☀	💧	1' 1'	●	🐝🦋
	California Coneflower / <i>Rudbeckia californica</i>	Y	☀☀	💧/💧	1' 1'	●	🐝🦋
	White Desert Primrose / <i>Oenothera caespitosa</i>	Y	☀☀	💧	1' 5'	●	🐝🦋
	Western Blue Flax / <i>Linum lewisii</i>	Y	☀☀	💧	3' 1'	●	🐝🦋
SPREADING GROUNDCOVER							
	Yarrow / <i>Achillea millefolium</i>	Y	☀☀☀	💧/💧	1' 2'	●	🐝🦋
	Yerba Mansa / <i>Anemopsis californica</i>	Y	☀☀☀	💧/💧	1' 2'	●	🐝🦋
	Desert Fuchsia / <i>Epilobium canum</i>	Y	☀☀	💧	3' 5'	●	🐝🦋
	Wright's Buckwheat / <i>Eriogonum wrightii</i>	Y	☀☀	💧	.5' 1'	●	🐝🦋
GRASSES							
	Indian Rice Grass / <i>Stipa hymenoides</i>	Y	☀	💧	1' 1'	—	
	Needle and Thread Grass / <i>Stipa comata</i>	Y	☀	💧	3' 1'	—	
	Alkali Sacaton / <i>Sporobolus airoides</i>	Y	☀☀	💧	3' 3'	—	
	Great Basin Wild Rye / <i>Elymus cinereus</i>	Y	☀	💧/💧	5' 5'	—	🐝
SUCCULENTS							
	Beavertail Cactus / <i>Opuntia basilaris</i>	Y	☀	💧	2' 5'	●	🐝
	Grizzly Bear Cactus / <i>Opuntia polyacantha</i>	Y	☀	💧	2' 5'	●	🐝
VINES							
	Virgin's Bower / <i>Clematis ligusticifolia</i>	Y	☀☀	💧/💧	2' 5'	●	🐝🦋

SUN

- ☀ Full Sun
- ☀☀ Part Sun
- ☁ Shade

WATER

- 💧 Very Low
- 💧 Low
- 💧💧 Medium

Plants on this list have been carefully selected by your local Bristlecone Chapter.



CALIFORNIA NATIVE PLANT SOCIETY
Visit Calscape.org to find more plants native to your area.